

EON Coliseum™

Expressive & Efficient Remote Communication



EON Coliseum™

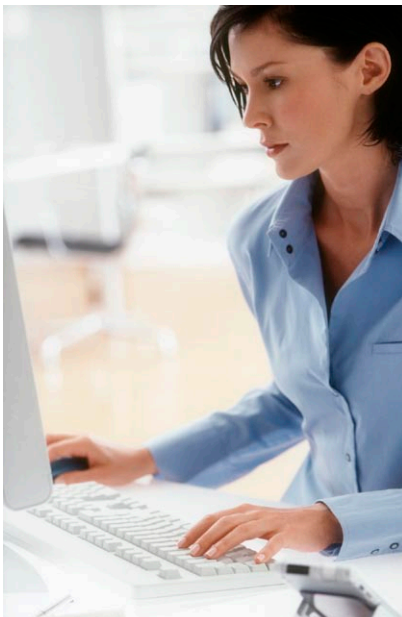
The Internet era has ushered unprecedented convenience for people to get connected whether they are geographically distant or in close proximity.

However, effective communication remains a challenge when there is a lack of consistent, scalable and illustrative environment.

EON Coliseum™ fills this gap by providing a platform where people can present their ideas, communicate complex concepts and collaborate using rich media objects such as web pages, presentation slides, video, livefeeds and interactive 3D content.



From virtual classrooms to key boardroom meetings, presentations come alive with EON Coliseum™ smart networking engine that cleverly optimizes quality of multi-modal communication on different systems so that connected parties can enjoy a seamless experience with every session.



Key Benefits

- Multi-modal communication brings virtual collaboration to the next level and cut costs in the long run while increasing productivity
- Voice-Over-IP (Peer-to-Peer/Conference)
- Streaming video
- Virtual Presentation Surface supporting major formats for text and imagery
- Datalink connects to virtually any software via TCP/UDP
- Network entity management for multi-user environment
- Collaborate in real-time with unlimited ways to visualize 3D objects
- Broadcast virtual presentation and training/instructional sessions in one single, consistent environment without the need to switch between many applications
- Proprietary network management technology supports optimized and scalable multiplexed communication for large numbers of concurrent users



“While creating multi-media and 3D content has been increasing easy, communicating such information virtually had been a challenge. EON Coliseum removes existing limitations by streamlining remote collaboration using optimized mashing technology, thus empowering the user with greater expressivity and efficacy in remote communication”

Sridhar Sunkad, Managing Director, EON Reality Pte. Ltd



What is EON Coliseum™

EON Coliseum is a technology platform built on top of EON Studio that enables building multi-modal virtual communication applications a breeze.

Users can enjoy the same convenience of an intuitive drag-and-drop graphical interface in EON Studio to construct collaborative virtual environments. Functions such as displaying live video feeds, Voice-over-IP and external data connection are embedded in EON Coliseum nodes and users can make use of them in conjunction with other node types in EON Studio.

Users can select from a wide range of multi-media options with EON Coliseum™ to realize the most demanding presentations.

Streaming Video Node

- Any planar surface can be a live video channel
- Supports industrial standard streaming

VoIP Node

- Zero-cost voice communication
- Crystal clear, secure voice communication
- Multi-party communication

Virtual Presentation Surface (VPS) Node

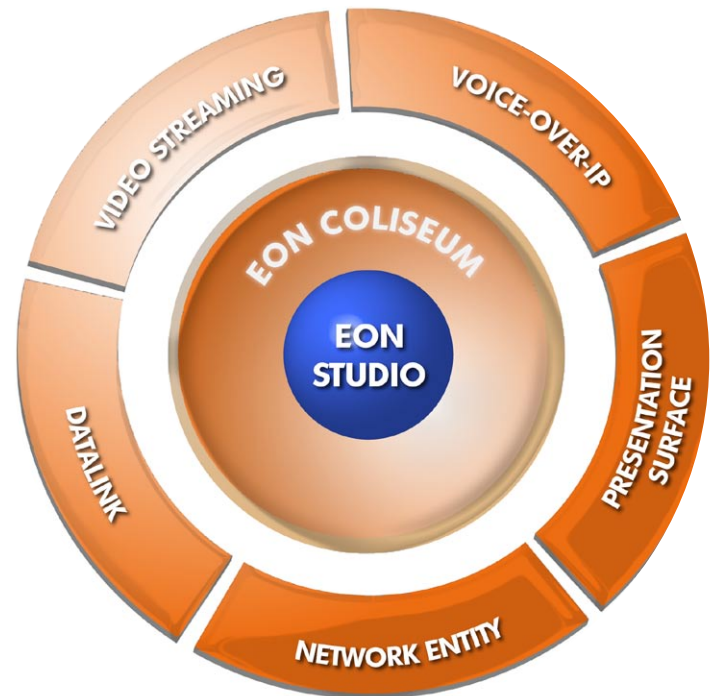
- Automatically maps major document formats (PPT, PDF, JPG etc) onto the VPS
- Remove switching between several applications during presentation
- Run-time update of the VPS for last-minute edits without the need to restart the software
- Numerous options to advance slides

DataLink Node

- Easily configurable data structure for generic communication
- Supports communication with virtually any software that uses TCP/UDP

Network Entity/Multi-User Server

- Client-server design brings virtual environments to life by supporting interaction between virtual entities such as avatars in real-time
- Messaging function provides users with additional communication channel on top of voice.



EON Reality, Inc.
39 Parker, Suite 100
Irvine, CA 92618 USA
Phone: +1 949 460 2000
Fax: +1 949 460 2004
E-mail: sales@eonreality.com
www.eonreality.com

EUROPE
EON Development AB
Datavägen 6B
SE-436 32 Askim
Sweden
Phone: +46 (0) 31 748 43 34

EON Reality Pte Ltd.
3 Anson Road #27-01
Spring Leaf Tower
Singapore 079909
Phone: +65 978 743 58
Fax: +65 656716 43
E-mail: sales@eonreality.com.sg